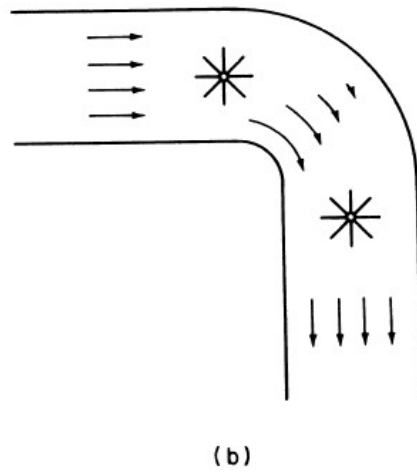
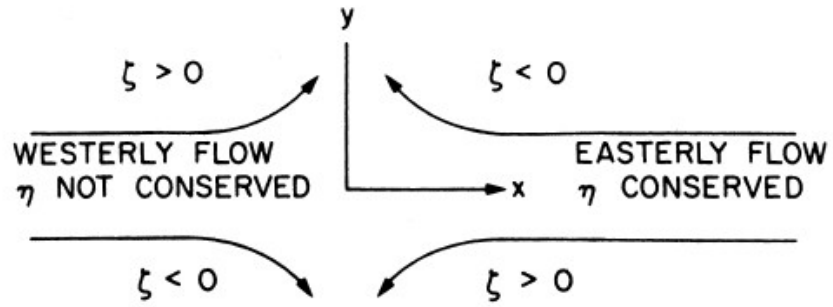
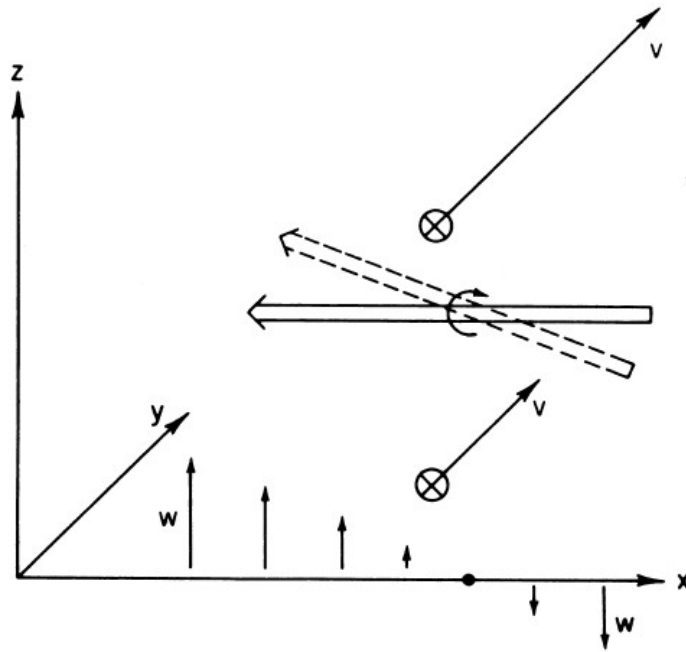


**Fig. 4.6** Two types of two-dimensional flow:  
(a) linear shear flow with vorticity and  
(b) curved flow with zero vorticity.





**Fig. 4.8** Absolute vorticity conservation for curved flow trajectories.



**Fig. 4.12** Vorticity generation by the tilting of a horizontal vorticity vector (double arrow).